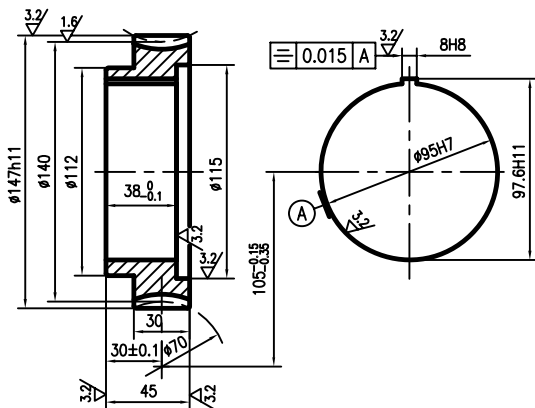


the other 12.5°

transverse module	m_t	3.5
tooth number	Z_2	40
nominal pressure angle	α	20°
modification coefficient	x_2	
addendum coefficient	ha_2	1
accuracy level		8-Dc
match worm	worm type	7A
	threads number	Z_1 4
	helix direction	right
	lead angle	γ $11^\circ 18' 36''$
accumulative pitch allowance	part no.	06129
	F_p	0.09
limit pitch error	$\pm f_p t$	± 0.022
contact point %	along tooth depth pitch tooth width	$> 50\%$ 50%



the other chamfers : $1 \times 45^\circ$

DRAWING 22.12 WORM WHEEL (CW61100E-06022)